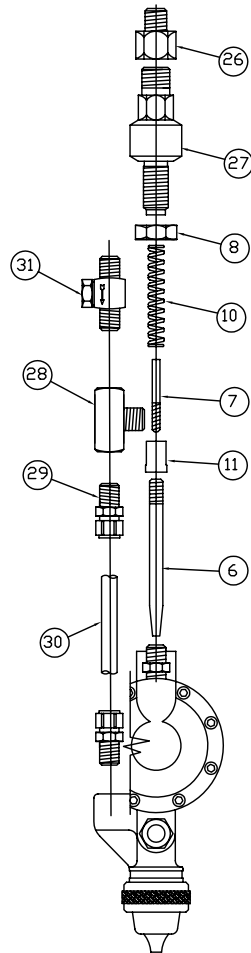
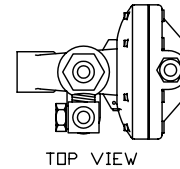


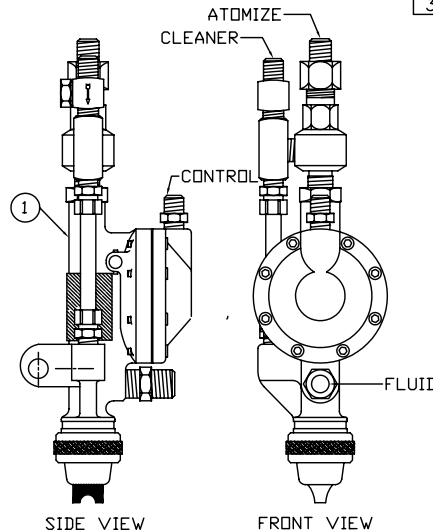
EXPLODED ASSEMBLY VIEW (SIDE)



EXPLODED ASSEMBLY VIEW (FRONT)



TOP VIEW



SIDE VIEW

FRONT VIEW

ITEM	QTY	PART NO	DESCRIPTION
1	1	KC-598-NBSSF	STRIPING GUN
1A	1	KC-123	FRAME
2	1	KC-110	NEEDLE PACKING (SET OF 2)
3	1	KC-109	PACKING NUT
4	1	KC-111	PACKING GLAND COVER
5	1	KC-113	TRIGGER PIN
6	1	KC-108-SS	NEEDLE, SS
7	1	KC-104	SPRING GUIDE
8	1	KC-102	LOCKING NUT
9	1	KC-117	DIAPHRAGM COVER
10	1	KC-103	SPRING, NEEDLE
11	1	KC-105	NEEDLE ADJUSTMENT STOP
12	1	KC-114	SPRING COTTER PIN
13	1	KC-112	TRIGGER
14	1	KC-115	DIAPHRAGM PLATE & PIN
15A	2	H-2008	NIPPLE, BRASS, 1/4 X 1/4 NPT
15B	2	KQH07-35S	PUSH LOCK FITTING, 1/4T X 1/4P
16	8	KC-118	DIAPHRAGM SCREWS
17	1	KC-116	DIAPHRAGM
18	1	F-03750694-SS	NIPPLE HEX 3/8" SS
19	1	AV-1	GASKET, FLUID TIP
20	1	WV-172-11A	AIR CAP ADAPTER
21	1	WV-173	AIR CAP RETAINING HOOD
22	1	AV-11	RETAINING NUT, KNURLED
23	1	S-24	AIR CAP, (HARDENED) 6-9"
23A	1	S-27	AIR CAP, (HARDENED) 4" LINE
24	1	AGA-1115-SS	FLUID TIP 1/4"
25	1	VW-94	ADAPTOR, FLUID TIP
26	1	120-64	ADAPTER, BRASS 3/8F x 1/4M
27	1	KC-140-1	NON-BLEEDER VALVE ONLY
28	1	131-4	TEE FITTING, 1/4F x 1/4M 1/4F NPT
29	2	1268-6	TUBE FITTING, 1/4P x 3/8T ST
30	1	4212-540N2	ATOMIZE AIR TUBE
31	1	KC-140-10	CHECK VALVE 1/4"
32	1	MB-47	LOCATING PIN

NOTE:

1. (*) INCLUDED IN NEEDLE REPAIR KIT PART NUMBER KC-146

2. (***) INCLUDED IN TIP REPAIR KIT PART NUMBER KC-147

TOLERANCES UNLESS OTHERWISE SPECIFIED:
 Angular $\pm 2^\circ$
 Fractional $\pm 1/16"$
 .X = ± 1
 .XX = ± 0.01
 .XXX = ± 0.005
 .XXXX = ± 0.0015

CONFIDENTIAL
 THIS DOCUMENT, INCLUDING ALL INFORMATION HEREIN, IS THE EXCLUSIVE AND CONFIDENTIAL PROPERTY OF ERNEST INDUSTRIES. THEREFORE THIS DOCUMENT IS NOT TO BE COPIED, REPRODUCED, OR DELIVERED TO OTHERS WITHOUT THE EXPRESS WRITTEN PERMISSION OF ERNEST INDUSTRIES.

Kelly-Creswell
 1221 Groop Rd.
 Springfield, OH 45504
 937-325-3978
KC Since 1937

DRAWN BY
 CDW
 APPROVED BY

DATE
 5-25-10
 DATE APPROVED

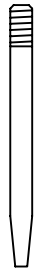
TITLE:
KC-598-NBSSF
 DESCRIPTION:
STRIPING GUN NB

DWG NO./PART NO.
KC-598-NBSSF
 SCALE: N/A
 SIZE: A
 PAGE #: 1-2
 REV: A

NEEDLE REPAIR KIT PART
NUMBER KC-146



KC-110
NEEDLE PACKING (SET OF 2)
QTY-1



KC-108
NEEDLE STAINLESS STEEL
QTY-1



KC-103
SPRING, NEEDLE
QTY-1



KC-116
DIAPHRAGM
QTY-1



AV-1
GASKET FLUID TIP
QTY-1



AGA-1115-SS
FLUID TIP 1 /4"
QTY-1

TIP REPAIR KIT PART
NUMBER KC-147



WV-172-11A
AIR CAP ADAPTER
QTY-1



WV-173
AIR CAP RETAINING HOOD
QTY-1



AV-11
RETAINING NUT, KNURLED
QTY-1



S-27
AIR CAP, (HARDENED) 4" LINE
QTY-1

TOLERANCES UNLESS
OTHERWISE SPECIFIED:
Angular $\pm 2^\circ$
Fractional $\pm 1/16"$
.X = ± 1
.XX = ± 0.01
.XXX = ± 0.005
.XXXX = ± 0.0015

CONFIDENTIAL
THIS DOCUMENT, INCLUDING
ALL INFORMATION HEREIN,
IS THE EXCLUSIVE AND
CONFIDENTIAL PROPERTY
OF ERNEST INDUSTRIES.
THEREFORE THIS DOCUMENT
IS NOT TO BE COPIED,
REPRODUCED, OR
DELIVERED TO OTHERS
WITHOUT THE EXPRESS
WRITTEN PERMISSION OF
ERNEST INDUSTRIES.

Kelly-Creswell
1221 Groop Rd.
Springfield, OH 45504
937-325-3978



DRAWN BY
CDW

DATE
7-14-10

APPROVED BY

DATE APPROVED

TITLE:

KC-598-NBSSF

DESCRIPTION:

KC-146/KC-147 REBUILD KIT

DWG NO./PART NO.

KC-598-NBSSF

SCALE:
N/A

SIZE:
A

PAGE #:
2-2

REV:
A